

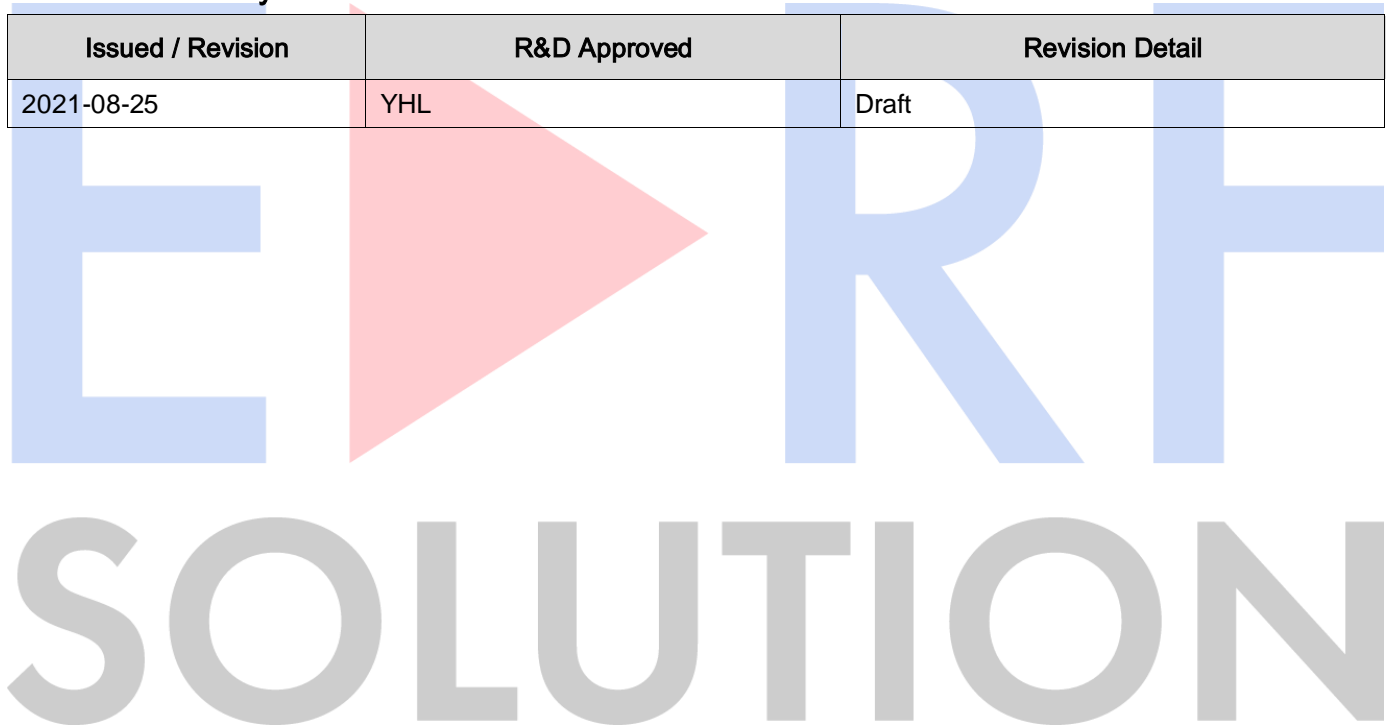
# Specification

## 1. Item

|            |                         |
|------------|-------------------------|
| Product    | 900MHz, 33dBm Amplifier |
| Partnumber | EHM-0925-33-38          |

## 2. Revision History

| Issued / Revision | R&D Approved | Revision Detail |
|-------------------|--------------|-----------------|
| 2021-08-25        | YHL          | Draft           |



|   |       |          |
|---|-------|----------|
| Design  | R & D | Approval |
|  |       |          |
| CYKIM   |       |          |

|           |       |                          |
|-----------|-------|--------------------------|
| Customer: | Date: | Part No.: EHM-0925-33-38 |
|-----------|-------|--------------------------|

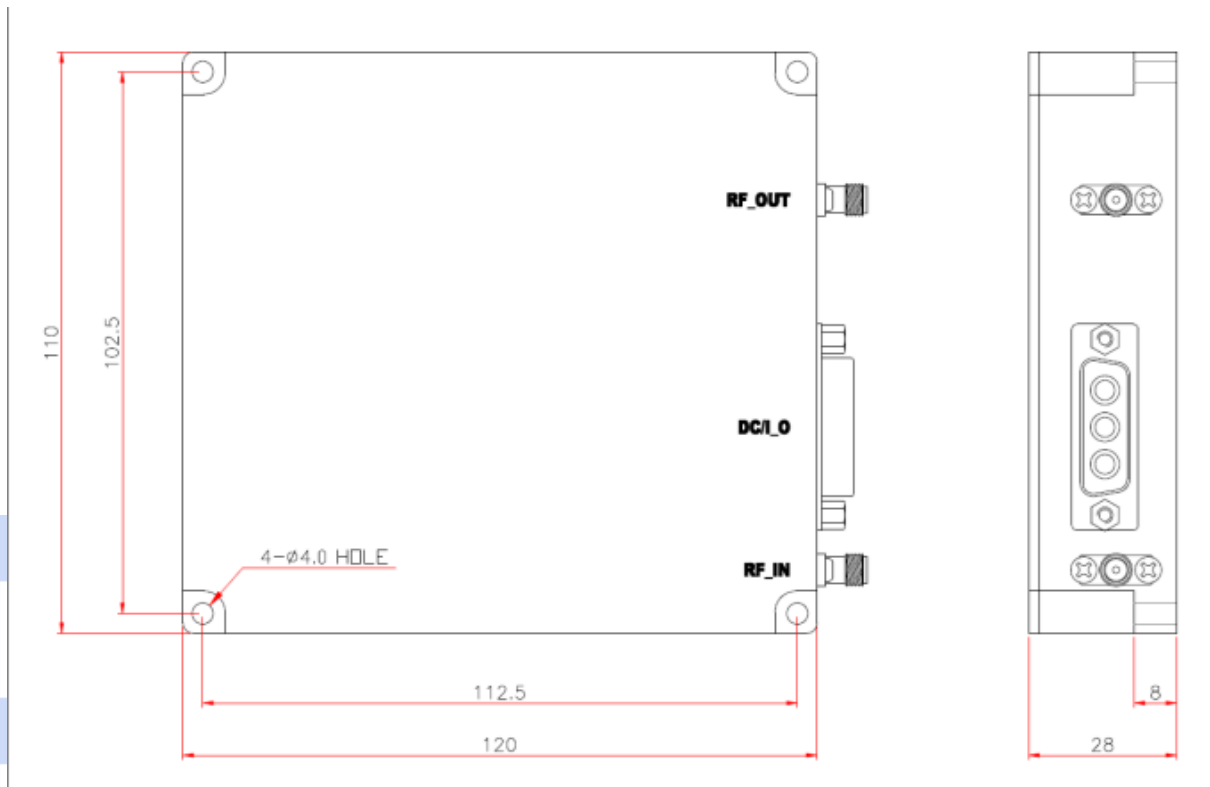
## General Specification

| No. | Parameter                          | Specification   | Unit            |
|-----|------------------------------------|---|-----------------|
| 1   | Operating Frequency Range          | 925 ~ 960 MHz   | LTE Band 8, FDD |
| 2   | Operating Bandwidth                | 35 MHz  | -               |
| 3   | Output Power Level                 | +33 dBm   | -               |
| 4   | Gain                               | 38 dB ±1dB  | -               |
| 5   | Gain Flatness                      | 1.5 dB ( peak to peak )   | -               |
| 6   | Input / Output VSWR                | 1.5 :1 max.   | -               |
| 7   | Harmonics @ Pout: +33dBm           | 30 dBc min.   | -               |
| 8   | ACLR<br>LTE (OFDMA) 10MHz, PAR 8dB | 45dBc min.  | -               |
| 9   | Amplifier Switch                   | Turn on at input power ≥ -30dBm<br>Turn off at input power ≤ -35dBm | -               |
| 10  | Amplifier Status                   | Turn on at High,<br>Turn off at Low                                 | -               |
| 11  | Operating Voltage                  | 28 V DC   | -               |
| 12  | Supply Current                     | 0.65A typ.  | -               |
| 13  | Maximum Power Consumption          | 20W max.  | -               |
| 14  | Operating Temperature              | -30 ~ +55 °C  | -               |

## Mechanical Specification

| No. | Parameter        | Specification       | Unit           |
|-----|------------------|---------------------|----------------|
| 1   | Dimension        | 120*110*28 mm       | W * D * H (mm) |
| 2   | Weight           | 550                 | g              |
| 3   | Connector Type   | SMA Female          | -              |
| 4   | Pin Map          | 1. 28 V DC          | 3W3 Male       |
|     |                  | 2. Ground           |                |
|     |                  | 3. Amplifier Status |                |
| 5   | Mounting Type    | with 4 holes        | -              |
| 6   | Heat Dissipation | Natural Convection  | -              |

■ Mechanical Dimension [Unit: mm]



ECHO RF SOLUTION