

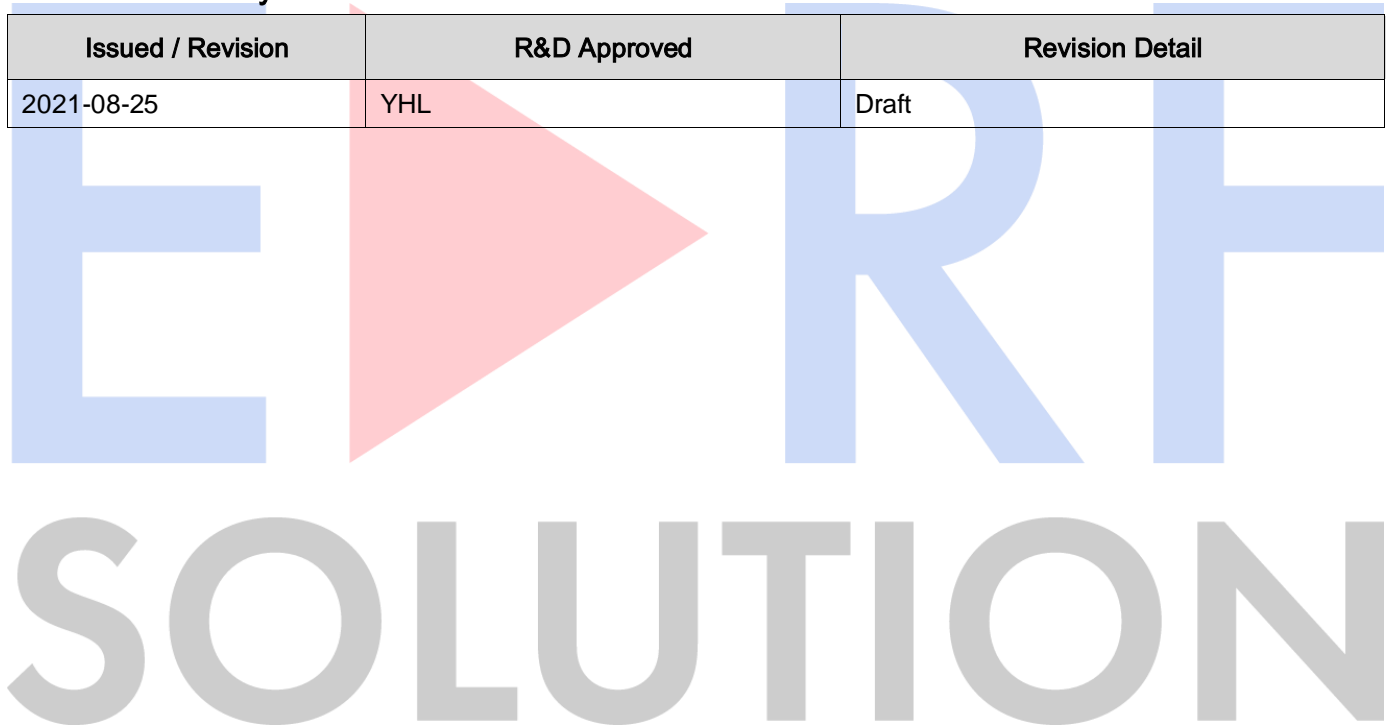
# Specification

## 1. Item

Product	2300MHz, 30dBm HPA
Partnumber	EHM-2300-30-35

## 2. Revision History

Issued / Revision	R&D Approved	Revision Detail
2021-08-25	YHL	Draft



Design	R & D	Approval
		
CYKIM		

Customer:	Date:	Part No.: EHM-2300-30-35
-----------	-------	--------------------------

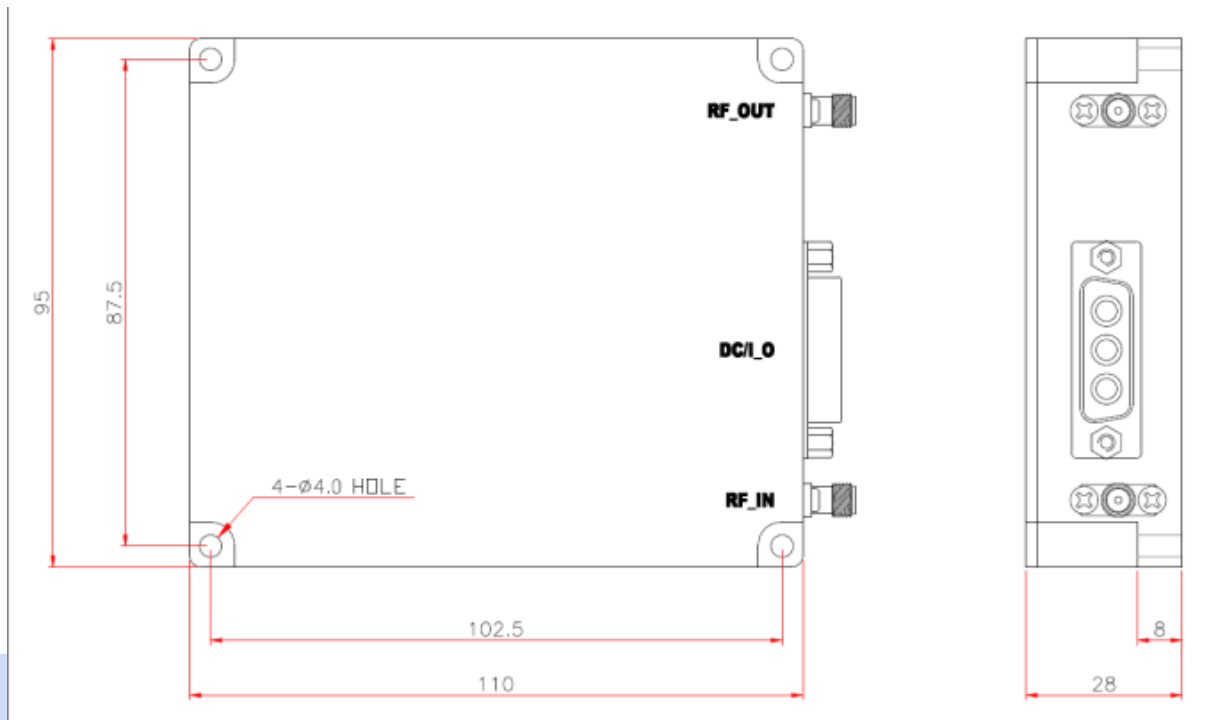
### General Specification

No.	Parameter	Specification	Unit
1	Operating Frequency Range	2300 ~ 2400 MHz	LTE Band 40, TDD
2	Operating Bandwidth	100 MHz	-
3	Output Power Level	+30 dBm	-
4	Gain	35 dB ±1dB	-
5	Gain Flatness	1.5 dB ( peak to peak )	-
6	Input / Output VSWR	1.5 :1 max.	-
7	Harmonics @ Pout: +33dBm	30 dBc min.	-
8	ACLR LTE (OFDMA) 10MHz, PAR 8dB	45dBc min.	-
9	Amplifier Switch	Turn on at input power ≥ -30dBm Turn off at input power ≤ -35dBm	-
10	Amplifier Status	Turn on at High, Turn off at Low	-
11	Operating Voltage	28 V DC	-
12	Supply Current	0.5A typ.	-
13	Maximum Power Consumption	20W max.	-
14	Operating Temperature	-30 ~ +55 °C	-

### Mechanical Specification

No.	Parameter	Specification	Unit
1	Dimension	110*95*25	W * D * H (mm)
2	Weight	500	g
3	Connector Type	SMA Female	-
4	Pin Map	1. 28 V DC	3W3 Male
		2. Ground	
		3. Amplifier Status	
5	Mounting Type	with 4 holes	-
6	Heat Dissipation	Natural Convection	-

### Mechanical Dimension [Unit: mm]



# ECHO RF SOLUTION